



STATE OF ALASKA  
LABOR STANDARDS & SAFETY  
AKOSH Consultation

# Alaska Occupational Safety and Health (AKOSH) 2025 Program Update

Mitch Wallace, Chief of Consultation and Training

Website link: <https://labor.alaska.gov/lss/oshhome.htm>

Toll free: (800) 656-4972

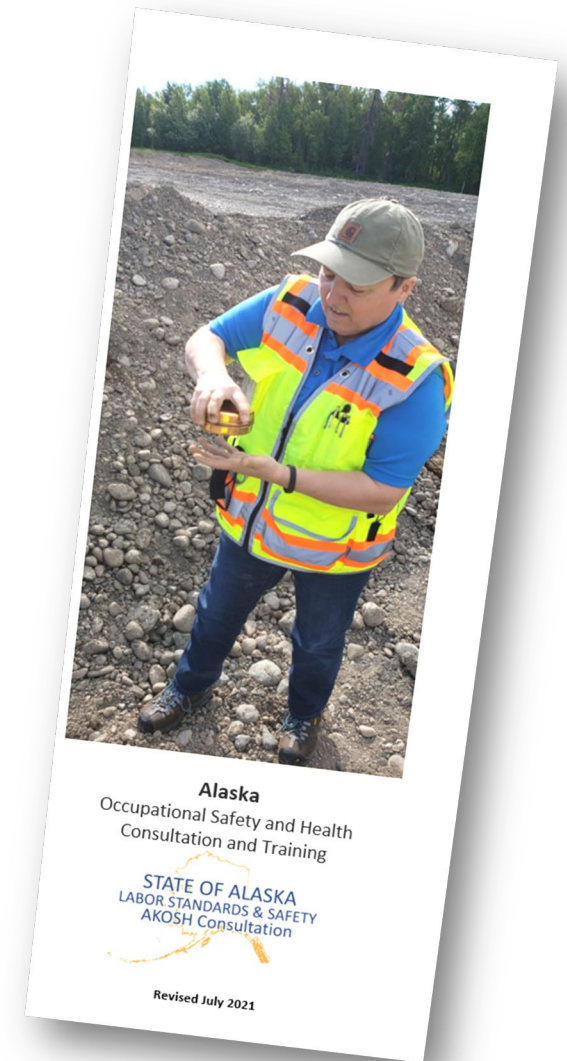
Local: (907) 269-4955

# AKOSH Introduction

## ❑ Protecting Alaska Workers Through Partnership and Compliance

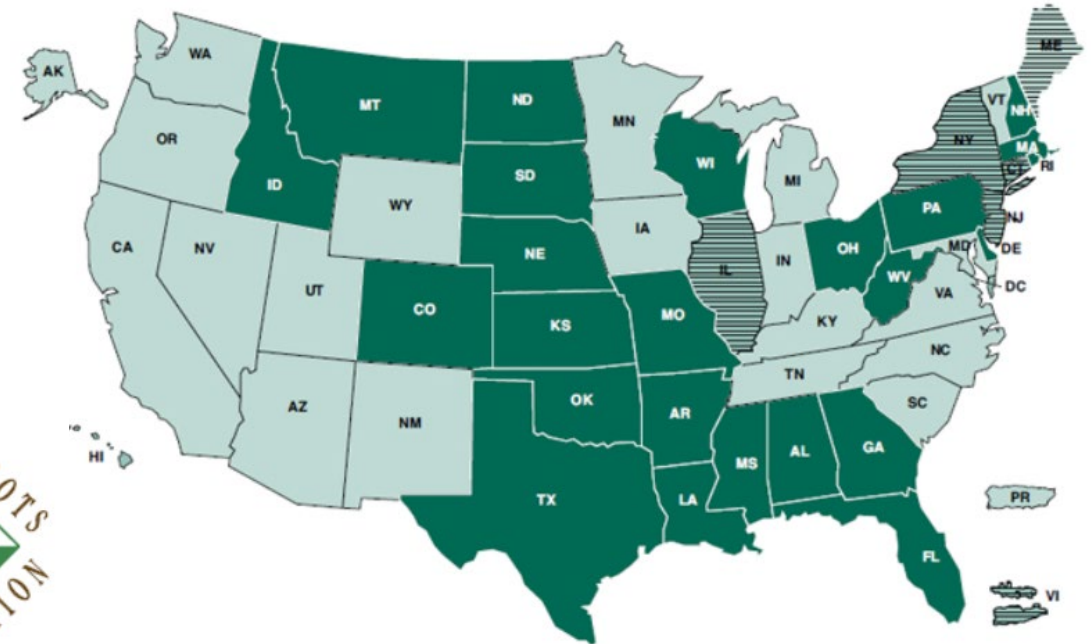
- ❑ Reduce workplace injuries, illnesses, and fatalities
- ❑ Support employers through consultation, training, and enforcement
- ❑ Promote strong safety and health management systems
- ❑ Build collaborative relationships with workers and industry

*Coverage from the North Slope to the Aleutian Islands*



# National Leadership & Collaboration

- AKOSH Consultation & Training and Enforcement
  - Active member of the Occupational Safety and Health State Plan Association (OSHSPA)
  - Hosted the 2025 OSHSPA Conference
    - Brought together safety leaders from across the U.S.
    - Strengthened partnerships and best-practice sharing



# Enforcement Activity & Updates (FY 2025)

## Enforcement Activity (FY 2025)

- ❑ **279** inspections conducted statewide
- ❑ **\$4.5M** in initial penalties
- ❑ Coverage from North Slope to the Aleutian Islands
- ❑ Field work requiring aircraft, watercraft, and off-road travel

## Innovation & Notable Cases

- ❑ Fatal electrical incident under criminal review
- ❑ Ketchikan Red-Tag action
  - ❑ Structural instability
  - ❑ 47,000 lbs ammonia present
- ❑ PSM inspection innovation
  - ❑ IRIS helmet camera technology
  - ❑ Real-time collaboration with OSHA Technical Center

# Enforcement FOM Update

## Improving Public Understanding

- ❑ The Enforcement Field Operations Manual (FOM) was redesigned to simplify the enforcement process for both employers and employees.
  - ❑ The new FOM is organized as a step-by-step guide with real-world case flow.
  - ❑ Chapters are clearly separated so users can quickly search for specific topics.
  - ❑ Language rewrote to be accessible, and technical points were defined more clearly.
  - ❑ The update improves transparency for the public and strengthens training for new AKOSH staff.
  - ❑ The new FOM supports consistent communication when explaining enforcement actions to employers, workers, and community partners.

# Diversiónary Program Impact

- ❑ Collaborative Compliance Model
- ❑ Program results since inception:
  - ❑ 487 citations issued
  - ❑ 81 employers participating
  - ❑ 508 additional hazards corrected
  - ❑ \$1.42M in forgiven penalties
- ❑ *Employers who proactively improve safety are rewarded through the diversionary process.*



# Consultation & Training Activity & Updates

## Expanding Safety Education

- ❑ Process Safety Management training in Wrangell and Petersburg
- ❑ Launch of the Seafood Industry Safety Committee
- ❑ Young worker safety outreach
- ❑ Women in Construction Week participation
- ❑ Industry partnerships on contamination and pesticide safety

## Outreach & Engagement

- ❑ Hosted OSHSPA Conference
- ❑ Organized Governor's Safety & Health Conference
- ❑ Launched High School Safety Video Competition
  - ❑ Hutchinson High School (Fairbanks)
  - ❑ \$2,500 winning safety video
  - ❑ Youth engagement supports the long-term culture of workplace safety.

# Assisted Living Home (ALH) LEP

- ❑ Program reach:
  - ❑ **15,497** workers at risk
  - ❑ **2,971** employees trained
  - ❑ **148** consultation visits
  - ❑ **~500** outreach letters distributed
- ❑ The ALH Local Emphasis Program significantly expanded awareness across Alaska's long-term care sector.
- ❑ Hazards identified:
  - ❑ **601** total hazards
  - ❑ **139** serious hazards
  - ❑ **428** other-than / **34** regulatory
  - ❑ **66** hazards abated onsite
- ❑ Visit distribution
  - ❑ Safety visits: **67**
  - ❑ Health visits: **81**
- ❑ Immediate hazard corrections resulted in direct worker risk reduction.

# Workplace Violence Prevention Initiative

- ❑ Development of Workplace Violence Prevention Checklist
- ❑ Collaboration with Alaska Department of Health (DOH)
  - ❑ Clarified roles between Enforcement and C&T
  - ❑ Client restraint intervention restrictions with DOH
- ❑ Potential AKOSH–DOH coordination and guidance development.
  - ❑ Potential MOU between Enforcement & DOH
  - ❑ Assess compliance gaps in caregiver a commendations with W&H



# Construction LEP Activity

- ❑ FY 2025 consultation metrics:
  - ❑ 106 construction visits
  - ❑ 271 hazards identified
  - ❑ 97 hazards abated onsite
- ❑ Hazard severity:
  - ❑ 1 imminent danger
  - ❑ 126 serious hazards
  - ❑ 144 other-than / regulatory
- ❑ *Consultation visits provide early hazard correction before incidents occur.*



# CHASE Construction Partnership

## The CHASE Program

- ❑ Strengthens contractor safety management systems
- ❑ Encourages employee involvement and near-miss reporting
- ❑ Reduces reliance on enforcement inspections
- ❑ Builds cooperative relationships between AKOSH and industry

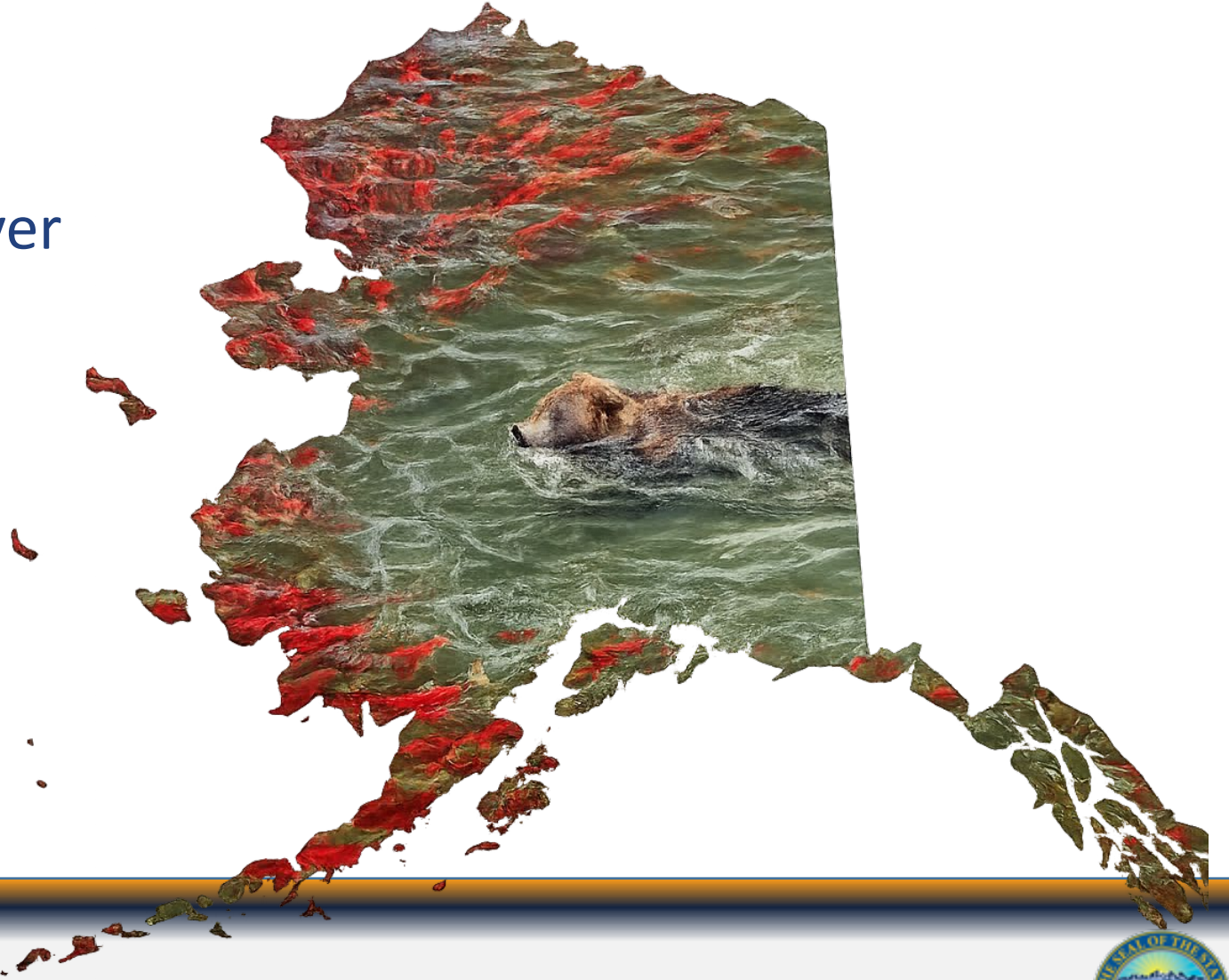
## Current Program Status

- ❑ Active contractors:
  - ❑ Flag Level: 1
  - ❑ Gold Level: 5
  - ❑ Blue Level: 4
  - ❑ Pending: 2
- ❑ Safety outcomes:
  - ❑ Participants consistently demonstrate TRC rates below national averages
  - ❑ Strong safety programs translate to measurable injury reduction



# NEW Seafood Partnership Program

- ❑ Seasonal workforce turnover
- ❑ Remote operating environments
- ❑ Language and onboarding challenges
- ❑ High physical demands



# Alaska Seafood Safety Committee (ASSC)

## Membership and Participation

- ❑ 46-member roster
- ❑ Management and non-management participation
- ❑ Seafood processors + Non processing Stakeholders

## Focus Areas

- ❑ Injury prevention: common injuries are ergonomic-related
- ❑ Shared best practices
- ❑ Standardized onboarding safety framework
- ❑ Industry resource development

# North to the Future!

- ❑ Future priorities:
  - ❑ Expand industry partnerships
  - ❑ Continue innovation in enforcement technology
  - ❑ Strengthen interagency coordination
  - ❑ Grow consultation and training programs
  - ❑ Engage the next generation of Alaska workers
- ❑ *AKOSH remains committed to protecting workers while supporting responsible employers across Alaska.*

